

Hella

modular switch range



*Ideas today for
the cars of tomorrow*

New modular switch generation 4100 from Hella.

This new generation of modular switches has been specially designed for use in trucks, cars, construction and agricultural machinery, as well as in special vehicles.

The new switch range extremely user friendly, thanks to the flexibility offered when deciding where to install the switches within the vehicle cabin.

Strengths of the product range:

■ Modular switch design

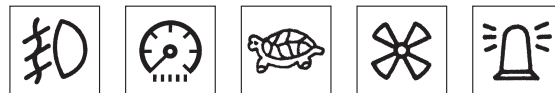


■ Realisation of a wide range of different switch functions 12 V / 24 V

- Make contact / Changeover contact
- Momentary contact / Maintained contact
- Blocking function
- Hazard light switch



■ Wide range of standard and customer-specific symbols



■ Direct, reliable and long-term illumination of the symbols thanks to use of up to 4 LED light sources

■ Simple installation either directly using the installation opening or using the modular installation frame

■ Tell-tale lights in same design for safety-related feedback

■ Modern and timeless design

■ Pleasant haptics (ergonomic addressing of the senses)



Accessories:

Installation frame:

A new-design modular system allows all installation configuration possibilities to be realised.

Tell-tale lights:

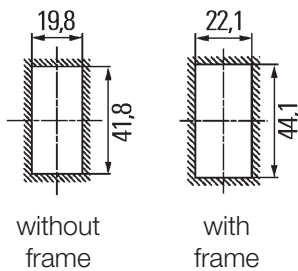
For safety-related or special applications, a reliable additional tell-tale is available which provides delocalised information about the switching state.

Detailed information including ordering instructions can be found under www.hella.de/modulschalter or www.hella.com/rockerswitch.

Technical details:

Installation opening19.8 mm x 41.8 mm
Rocker materialPC transparent, painted
Base materialPA white, housing PA black
Terminal contacts3 mm Junior Power Timer
Coating of switch contactsAgNi
Plug-type connectionsilver-plated
Light source	..max. 4 LEDs: 2 x location lighting, green2 x functional lighting, red
Symbol typelasered according to catalogue orcustomer-specific in dxf format
Service life5 mA / 450,000 cycles (Ag gal Au)5 A / 24 V inductive, 270,000 cycles4 A / 24 V bulb (75 W) / 90,000 cycles10 A/24 V resistive / 80,000 cycles
ImpermeabilityIP 30
Operating temperature- 40°...+85 °C
Storage temperature- 40°...+100 °C
Dashboard thickness	..in the case of direct installation of switch: 2 mm

Installation opening

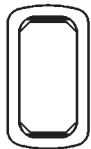


Receptacle housing

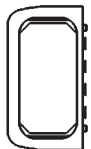


8JD 010 076-002/-007

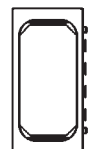
Installation frame



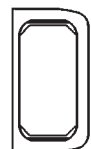
Individual frame **9AR 168 396-002/-007**



End piece, left **9AR 169 209-002/-007**



Middle piece **9AR 169 208-002/-007**

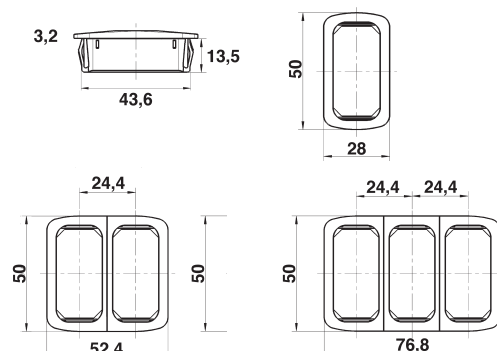


End piece, right **9AR 169 210-002/-007**



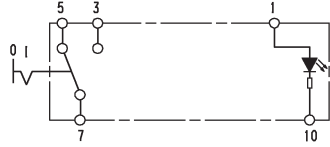
Installation frame

Dimensions of installation frame in mm

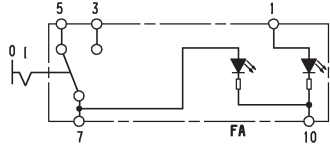


Changeover contact, maintained contact, 1-pole

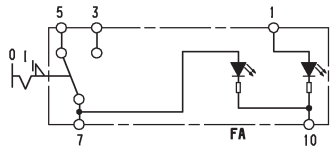
1-stage,
Symbol lighting: 1 x,
Function tell-tale: none



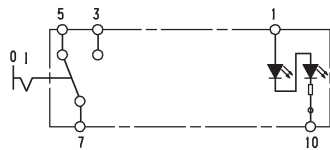
1-stage,
Symbol lighting: 1 x,
Function tell-tale:
1 x internal



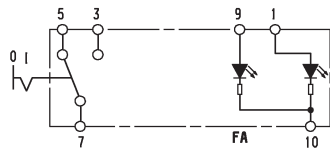
1-stage,
Symbol lighting: 1 x,
Function tell-tale:
1 x internal, block



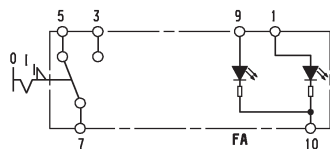
1-stage,
Symbol lighting: 2 x,
Function tell-tale: none



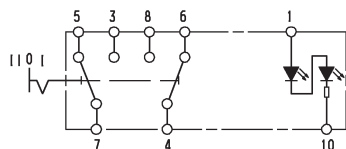
1-stage,
Symbol lighting: 1 x,
Function tell-tale:
1 x external



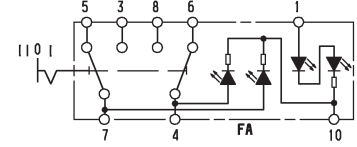
1-stage,
Symbol lighting: 1 x,
Function tell-tale:
1 x external, block



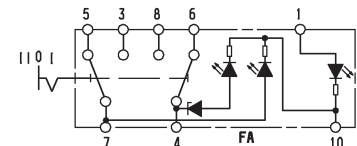
2 x 1-pole, 2-stage,
Symbol lighting: 2 x,
Function tell-tale: none



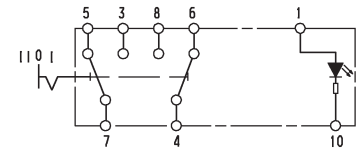
2 x 1-pole, 2-stage,
Symbol lighting: 2 x,
Function tell-tale:
2 x internal



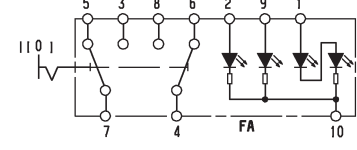
2 x 1-pole, 2-stage,
Symbol lighting: 1 x,
Function tell-tale:
2 x internal,
1 x protective diode



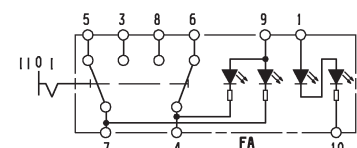
2 x 1-pole, 2-stage,
Symbol lighting: 1 x,
Function tell-tale: none



2 x 1-pole, 2-stage,
Symbol lighting: 2 x,
Function tell-tale:
2 x external

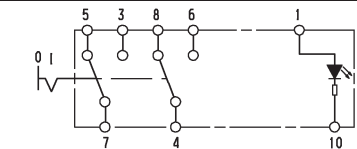


2 x 1-pole, 2-stage,
Symbol lighting: 2 x,
Function tell-tale:
2 x internal

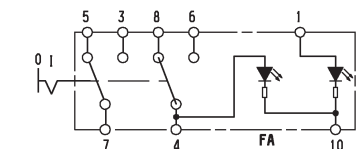


Changeover contact, maintained contact, 2-pole

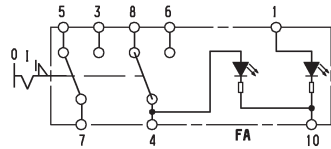
1-stage,
Symbol lighting: 1 x,
Function tell-tale: none



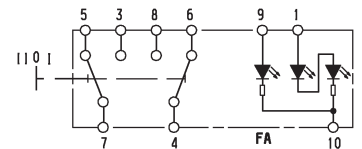
1-stage,
Symbol lighting: 1 x,
Function tell-tale:
1 x internal



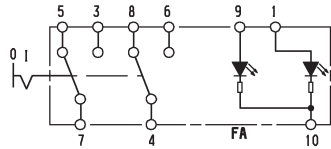
1-stage,
 Symbol lighting: 1 x,
 Function tell-tale:
 1 x internal, block



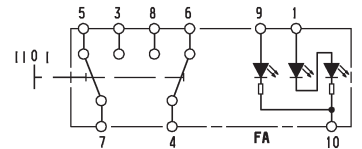
2 x 1-pole, 2-stage,
 Symbol lighting: 2 x,
 Function tell-tale:
 1 x external



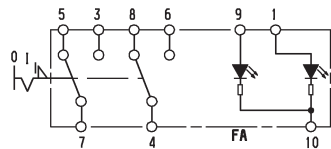
1-stage,
 Symbol lighting: 1 x,
 Function tell-tale:
 1 x external



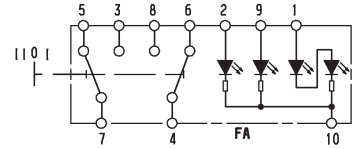
2 x 1-pole, 2-stage,
 Symbol lighting: 2 x,
 Function tell-tale:
 1 x external
 l: maintained contact
 n: momentary contact



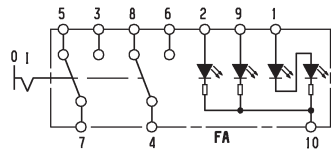
1-stage,
 Symbol lighting: 1 x,
 Function tell-tale:
 1 x external, block



2 x 1-pole, 2-stage,
 Symbol lighting: 2 x,
 Function tell-tale:
 2 x external

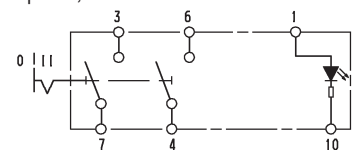


1-stage,
 Symbol lighting: 2 x,
 Function tell-tale:
 2 x external



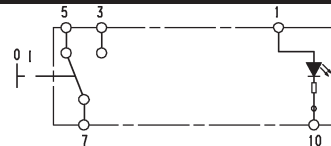
Make contact

maintained contact, 2 x 1-pole,
 2-stage,
 Symbol lighting: 1 x
 Function tell-tale: none
 Position I: 4-6
 Position II: 4-6, 3-7

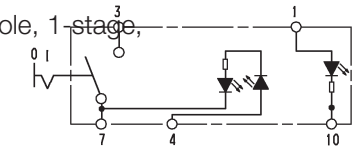


Changeover contact, momentary contact, 1-pole

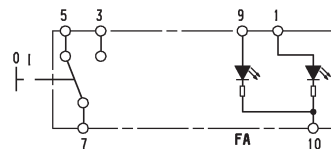
1-stage,
 Symbol lighting: 1 x,
 Function tell-tale: none



Hazard-light switch,
 maintained contact, 1-pole, 1-stage,
 Symbol lighting: 1 x,
 Function tell-tale:
 1 x internal

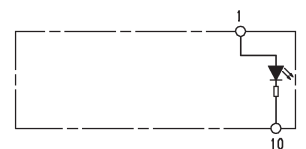


1-stage,
 Symbol lighting: 1 x,
 Function tell-tale:
 1 x external

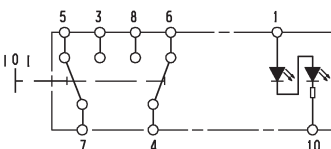


Tell-tale light

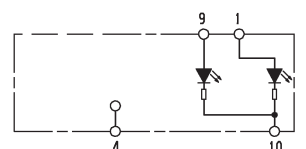
for illumination of
 symbol field 1



2 x 1-pole, 2-stage,
 Symbol lighting: 2 x,
 Function tell-tale: none

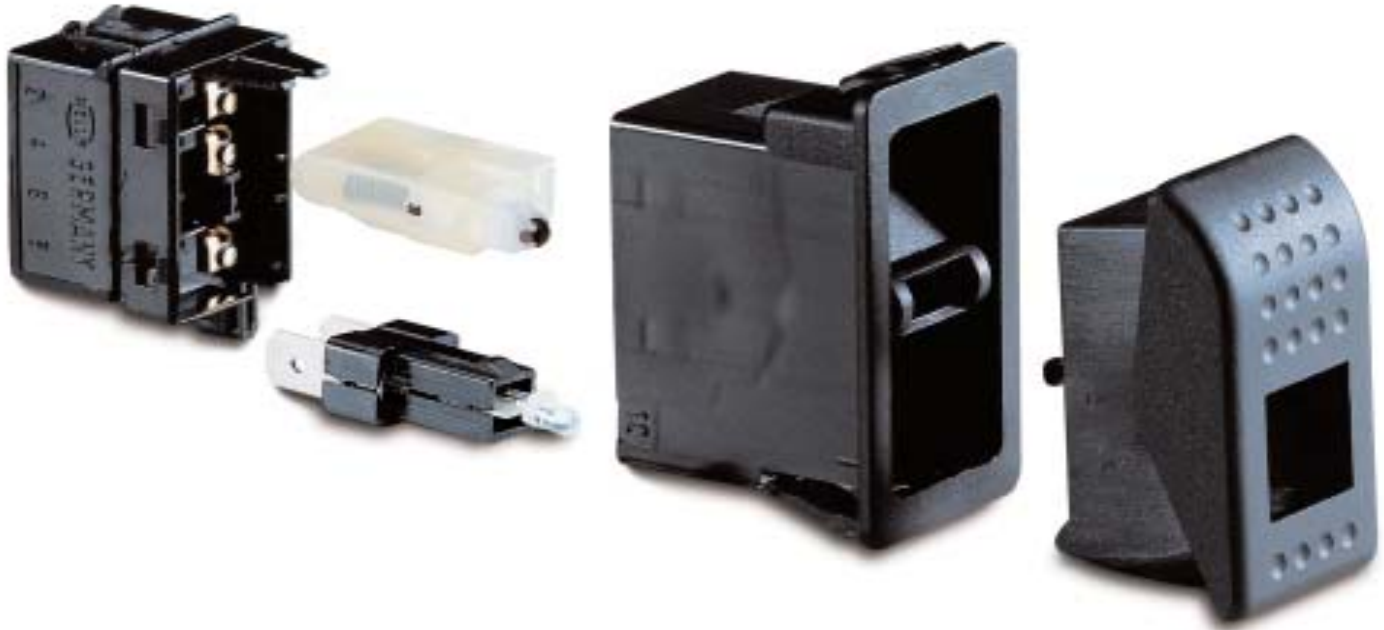


for illumination of
 symbol fields 1 and 2



Hella switch series 7832/4570

The Hella switch series 7832/4570 have been designed for truck and car interiors.



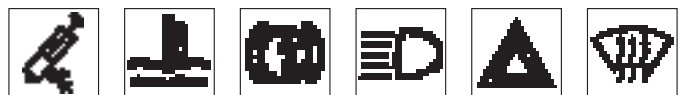
The series use the standards common in vehicle construction. The advantages of the Hella series are to be found in the modular design and high switching capacity.

The following are available:

- Complete automotive function range (standards and specific functions)
- One-stage and two-stage switches
- One circuit and two circuits
- Momentary contact switch or maintained contact switch
- Effective locking system
- 12 V / 24 V voltage
- LED and bulb technology
- Wide range of symbol plates that are clicked in place
- Initial fitting and retrofitting through standardised installation opening 41.1 x 2.2 mm, as well as installation frame

Comprehensive range of symbols

A comprehensive range of symbols ensures the correct marking of all important switching and monitoring functions. All symbols can be represented. The switch and control tell-tales can be illuminated. Installation strips to form rows and combinations of switches round off the range. The switch series are ideal for initial fitting and retrofitting thanks to meaningful installation and connection accessories.



Technical details:

Housing, installation accessories:Plastic,
black grained
Functional ability:- 35 °C bis + 65 °C
Storage ability:- 40 °C bis + 90 °C
Protective class:Suitable for interiors according
to IP6X (DIN 40050)
Reliable drop in voltage:before permanent use
max. 10 mV / A
after permanent use
max. 20 mV / A
Bulb:W5/1.2 12 V/24 V, DIN 72601
Dashboard thickness:1 – 2.5 mm
Contacting:Blade terminal 6.3 mm
DIN 46244,
routed out of the switch housing

Switching forces

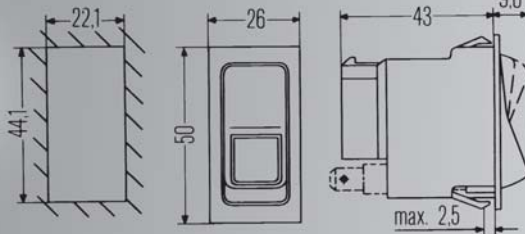
1-stage0-I
0-I; I-O = 6N±3N
 2-stage0-I-II
0-I; II-I = 6N±3N
 2-stageI-O-II
I-O; II-O = 5N±2N
I-O; I-II = 11N±4N
0-I; O-II = 11N±4N
 Momentary contact:8N±3N

For the types 6HH 007 832-28/-29/-30/-32/-59/-64/-66/
 -71/-72/-77 (hazard-light switch) the following applies:

Load values at:
 12 V / 24 V:10 A = 10,000 switching processes
 Switching forces:0-I; I-O = 8N±3N
 Load capacity:12 V 16 A; 24 V 8 A

Load values (without load)			
Test voltage 13.5 V		Test voltage 27.5 V	
Amp.	Service life	Amp.	Service life
6	250.000 switching processes	3	150.000 switching processes
10	150.000 switching processes	5	100.000 switching processes
16	20.000 switching processes	8	20.000 switching processes

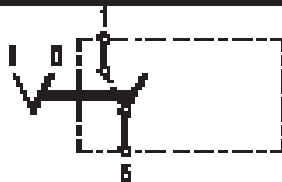
Hella switch series 4570



Maintained-contact switch, 1-stage, one circuit

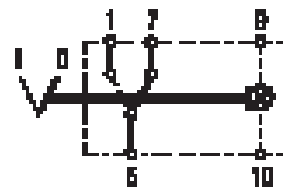
without lighting
6EH 004 570-001
6EH 007 832-001

PU 1
PU 1



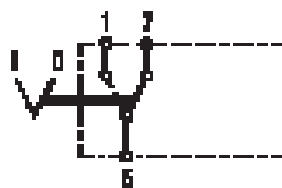
with location and functional lighting, gold-plated connections
6FH 004 570-777

PU 50



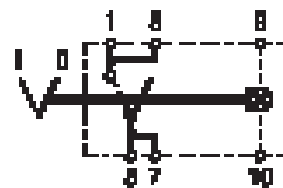
without lighting
6FH 004 570-101
6FH 007 832-051

PU 1
PU 1



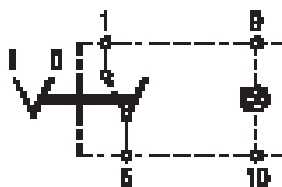
with location and functional lighting
6EH 004 570-681
6EH 007 832-611

PU 1
PU 1



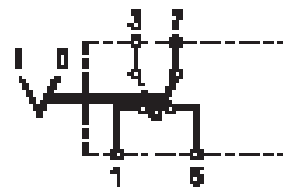
with location lighting
6EH 004 570-011
6EH 007 832-011

PU 1
PU 1



without lighting
6FH 007 832-501

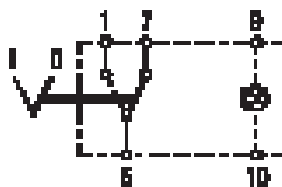
PU 1



Maintained-contact switch, 1-stage, two circuits

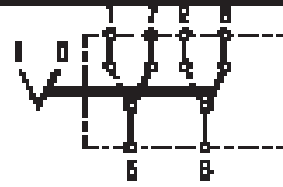
with location lighting
6FH 004 570-111
6FH 007 832-061

PU 1
PU 1



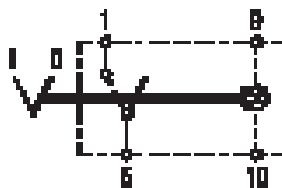
without lighting
6FH 004 570-501
6FH 007 832-121

PU 1
PU 1



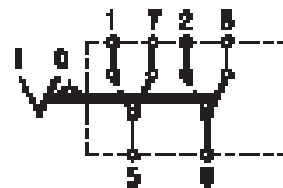
with location and functional lighting
6EH 004 570-021
6EH 004 570-027
6EH 007 832-021

PU 1
PU 50
PU 1



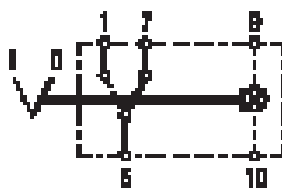
without lighting, 2 actuation locks
6EH 007 832-601

PU 1



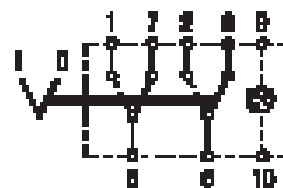
with location and functional lighting
6FH 004 570-121
6FH 004 570-127
6FH 007 832-061

PU 1
PU 50
PU 1



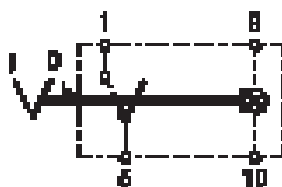
with location lighting
6FH 004 570-341

PU 1



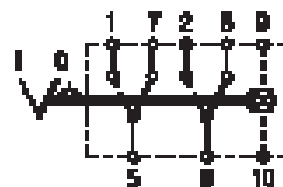
with location and functional lighting, actuation lock
6EH 004 570-621
6EH 007 832-041

PU 1
PU 1

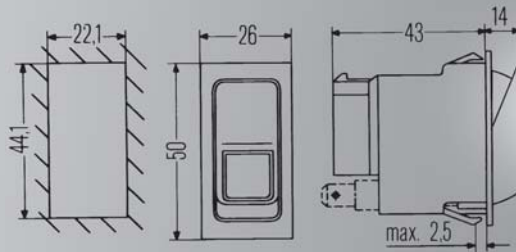


with location and functional lighting, 2 actuation locks
6EH 004 570-641
6EH 007 832-751

PU 1
PU 1

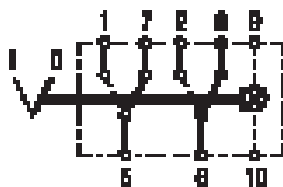


Hella switch series 7832



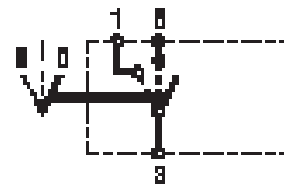
with location and functional lighting
6FH 004 570-131
6FH 004 570-137
6FH 007 832-101

PU 1
PU 50
PU 1



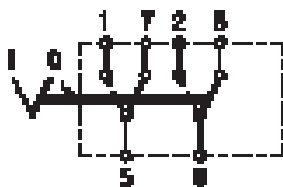
without lighting
6RH 004 570-151
6RH 007 832-331

PU 1
PU 1



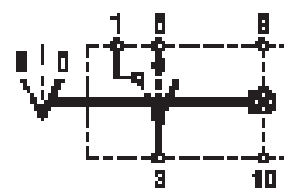
without lighting,
with actuation lock
6RH 008 910-011

PU 1



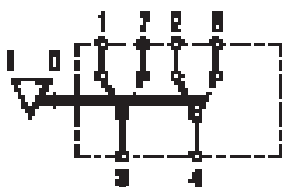
with location and functional lighting
6RH 004 570-171
6RH 004 570-177
6RH 007 832-351

PU 1
PU 50
PU 1



without lighting
6GM 007 832-521

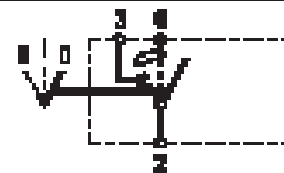
PU 1



Maintained-contact switch, combination switch, 2-stage,

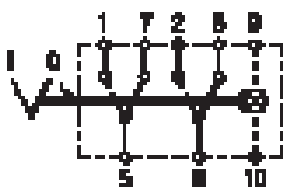
without lighting
6RH 004 570-351
6RH 007 832-431

PU 1
PU 1



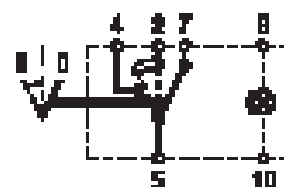
with location and functional lighting,
actuation lock
6EH 007 832-491

PU 1



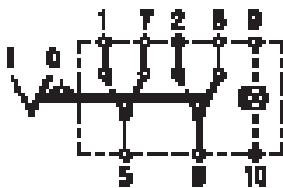
with location lighting,
2nd stage momentary contact
6RH 004 570-311
6RH 007 832-411

PU 1
PU 1



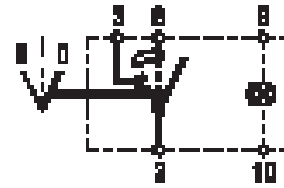
with location lighting,
actuation lock
6EH 007 832-671

PU 1



with location lighting
6RH 004 570-361
6RH 007 832-441

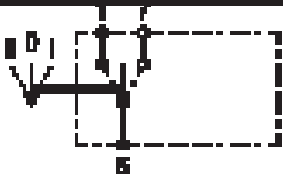
PU 1
PU 1



Maintained-contact switch, 2-stage, one circuit

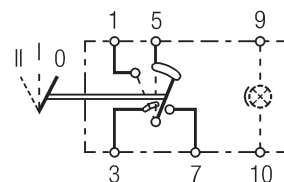
without lighting
6FH 004 570-511
6FH 004 570-517
6FH 007 832-131

PU 1
PU 50
PU 1



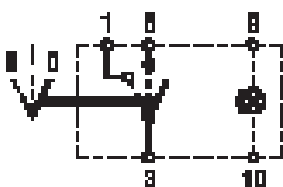
with location lighting
6RH 004 570-261
6RH 004 570-267
6RH 007 832-391

PU 1
PU 50
PU 1



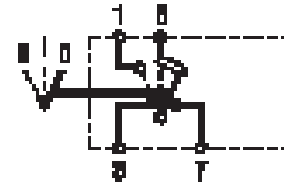
with location lighting
6RH 004 570-161
6RH 007 832-341

PU 1
PU 1



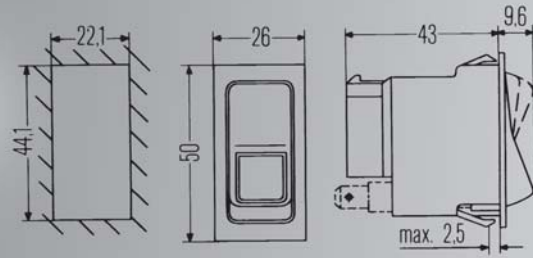
without lighting
6FH 007 832-511

PU 1



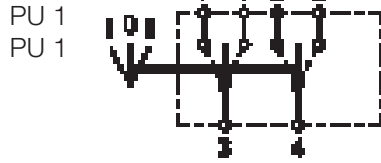


Hella switch series 4570

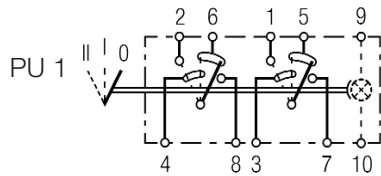


Maintained-contact switch, combination switch, 2-stage, two circuits

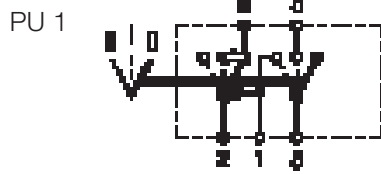
without lighting
6FH 004 570-531
6FH 007 832-161



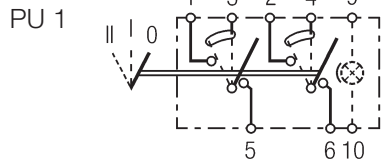
with location and functional lighting
6RH 004 570-382



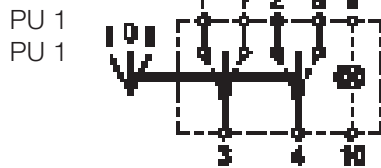
without lighting
6RH 007 832-761



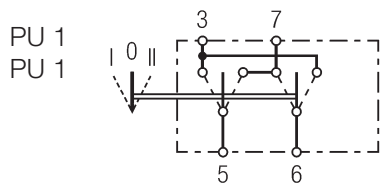
with location lighting
6RH 007 832-681



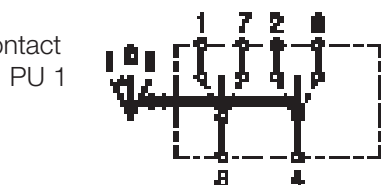
with location lighting
6FH 004 570-521
6FH 007 832-151



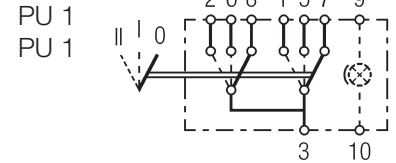
without lighting
6RH 004 570-751
6RH 007 832-481



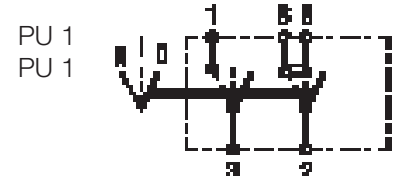
without lighting,
1st stage momentary contact
6FH 004 570-541



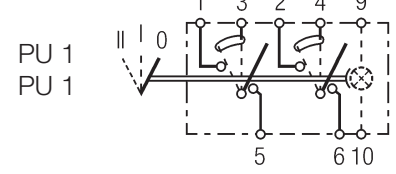
with location lighting
6RH 004 570-371
6RH 007 832-701



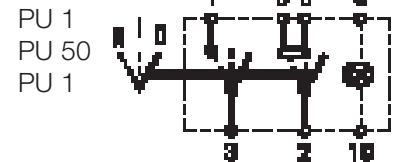
without lighting
6RH 004 570-401
6RH 007 832-451



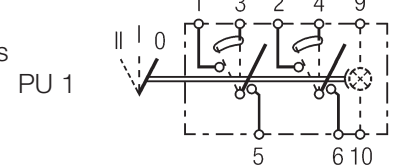
with location and functional lighting
6RH 004 570-187
6RH 007 832-377



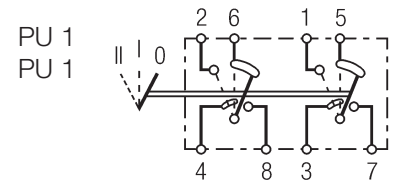
with location lighting
6RH 004 570-411
6RH 004 570-417
6RH 007 832-461



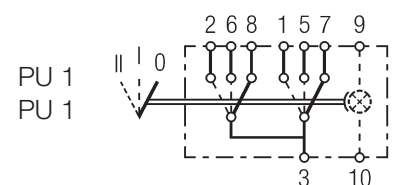
with location and functional lighting,
gold-plated connections
6RH 004 570-787



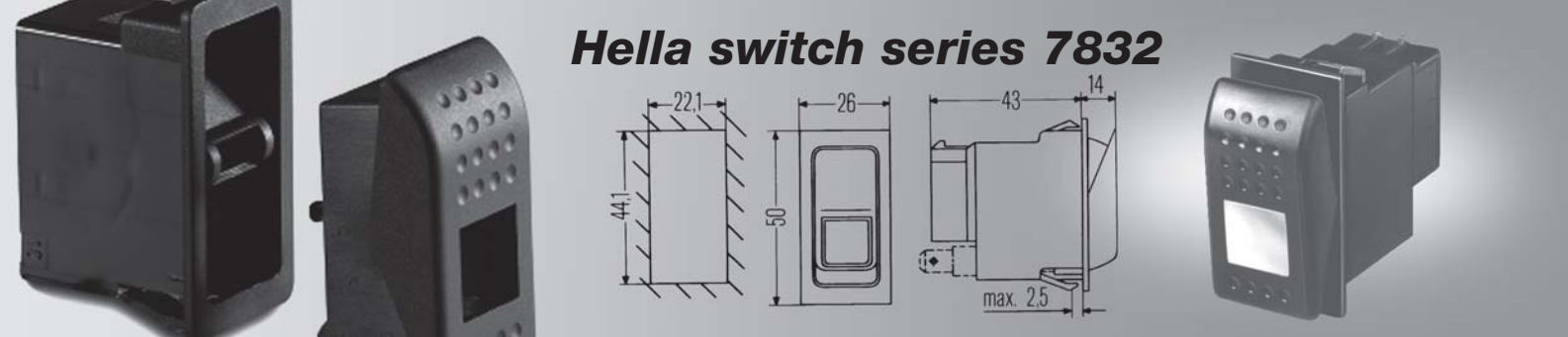
without lighting
6RH 004 570-191
6RH 007 832-381



with location and functional lighting
6RH 004 570-321
6RH 007 832-731

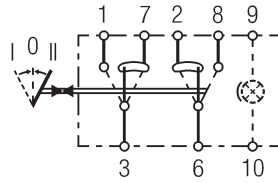


Hella switch series 7832



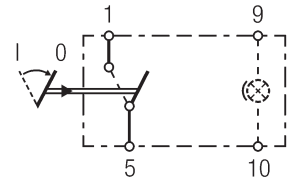
with location and functional lighting, gold-plated connections
6RH 008 910-022

PU 10



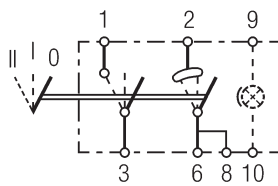
with location lighting, gold-plated connections
6GM 004 570-767

PU 1



with location and functional lighting
6RH 004 570-671

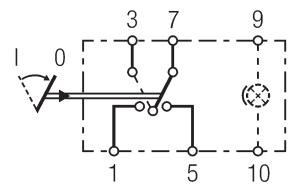
PU 1



with location lighting
6GM 004 570-081
6GM 007 832-221

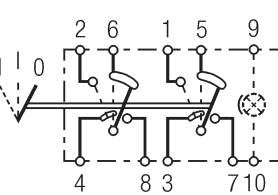
PU 1

PU 1



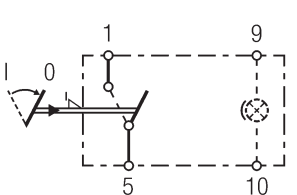
with location lighting
6RH 007 832-741

PU 1



with location lighting, actuation lock
6GM 007 832-271

PU 1

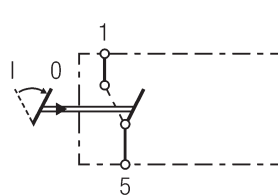


Momentary-contact switch, 1-stage, one circuit without lighting

6GM 004 570-051
6GM 007 832-181

PU 1

PU 1

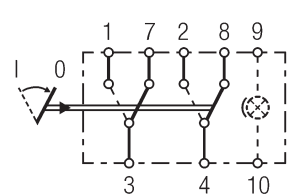


Momentary-contact switch, 1-stage, two circuits

with location lighting
6FH 004 570-571
6FH 007 832-621

PU 1

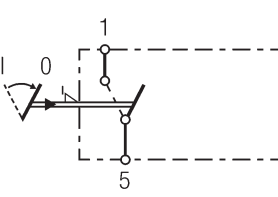
PU 1



without lighting, with actuation lock
6GM 004 570-691
6GM 007 832-581

PU 1

PU 1

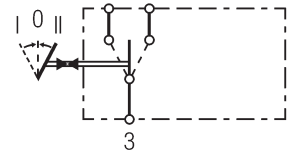


Momentary-contact switch, 2-stage, one circuit

without lighting
6GM 004 570-201
6GM 007 832-231

PU 1

PU 1

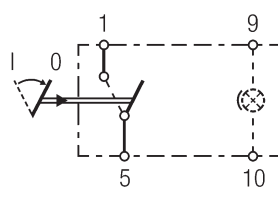


with location lighting
6GM 004 570-061
6GM 004 570-067
6GM 007 832-191

PU 1

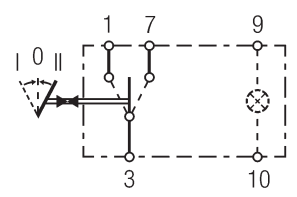
PU 50

PU 1



with location lighting, gold-plated connections
6GM 004 570-797

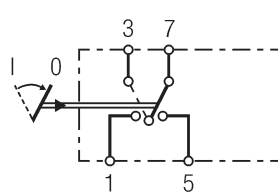
PU 50



without lighting
6GM 004 570-071
6GM 007 832-211

PU 1

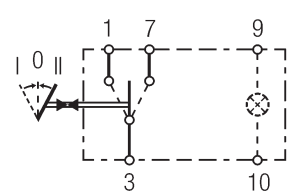
PU 1



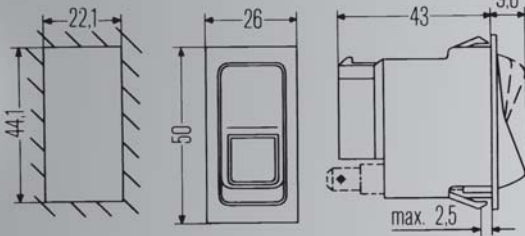
with location lighting
6GM 004 570-211
6GM 007 832-241

PU 1

PU 1



Hella switch series 4570



Maintained-contact switch, 2-stage, two circuits

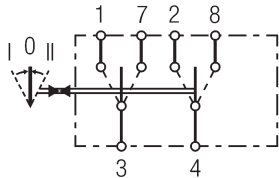
without lighting

6GM 004 570-231

PU 1

6GM 007 832-261

PU 1



with location and

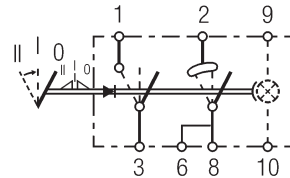
functional lighting,

2nd stage momentary contact,

actuation lock

6RH 007 832-651

PU 1



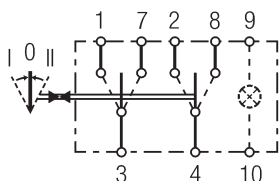
with location lighting

6GM 004 570-221

PU 1

6GM 007 832-251

PU 1



Hazard-light switch

with LED, designed for

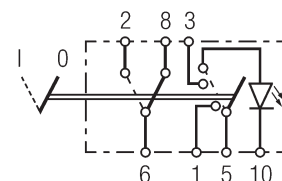
functional lighting

6HH 004 570-431

PU 1

6HH 007 832-711

PU 1



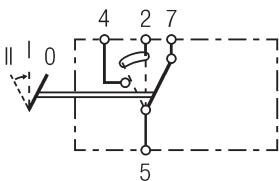
Maintained-contact switch, combination switch, 2-stage, one circuit

without lighting,

2nd stage momentary contact

6RH 007 832-551

PU 1



with 24 V bulb, location and

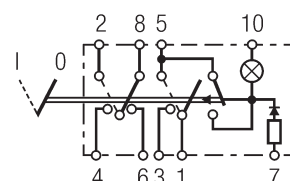
functional lighting

6HH 004 570-481

PU 1

6HH 007 832-301

PU 1



Maintained-contact switch, combination switch, 2-stage, two circuits

with location lighting,

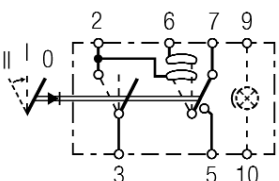
2nd stage momentary contact

6RH 004 570-331

PU 1

6RH 007 832-421

PU 1

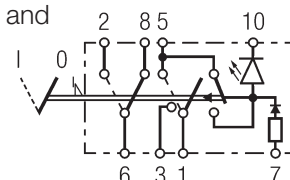


with LED, designed for location and

functional lighting

6HH 007 832-721

PU 1



with 12 V bulb, location and

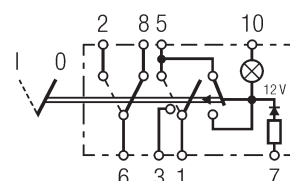
functional lighting

6HH 004 570-491

PU 1

6HH 007 832-321

PU 1



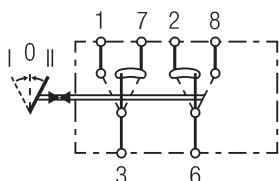
without lighting

6GM 004 570-271

PU 1

6GM 007 832-631

PU 1



with 12 V bulb,

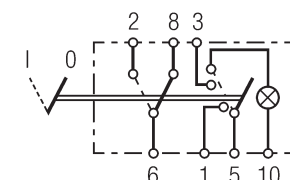
with functional lighting

6HH 004 570-451

PU 1

6HH 007 832-281

PU 1



with location lighting,

1st stage momentary contact,

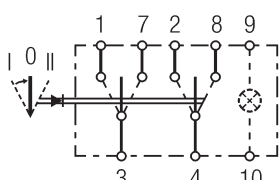
2nd stage maintained contact

6FH 004 570-241

PU 1

6FH 007 832-171

PU 1



with 12 V bulb, red key,

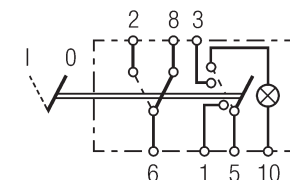
functional lighting

6HH 004 570-581

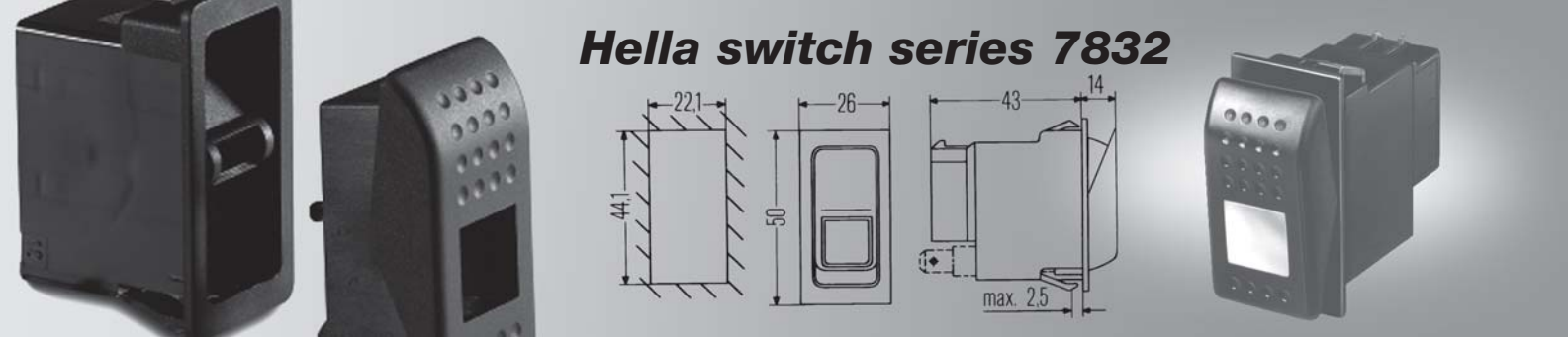
PU 1

6HH 007 832-661

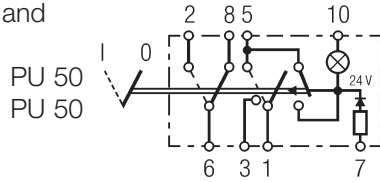
PU 1



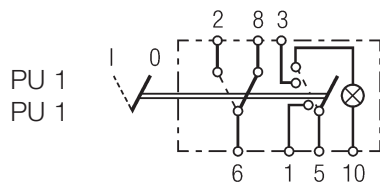
Hella switch series 7832



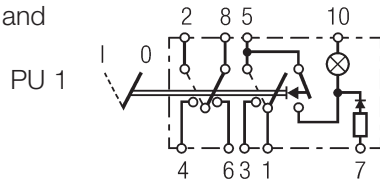
with 24 V bulb, location and
functional lighting
6HH 004 570-477
6HH 007 832-297



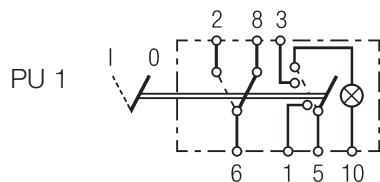
with 24 V bulb, red key,
functional lighting
6HH 004 570-591
6HH 007 832-641

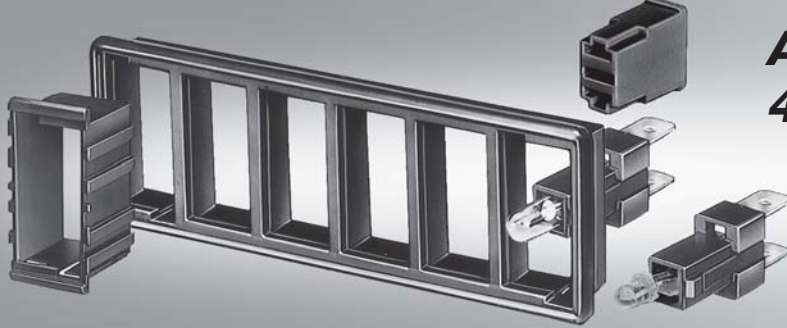


with 12 V bulb, location and
functional lighting
6HH 007 832-771



with 24 V bulb, with
functional lighting
6HH 007 832-591



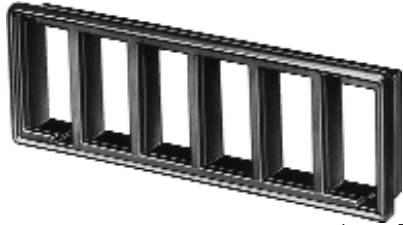


Accessories for series 4570 and 7832

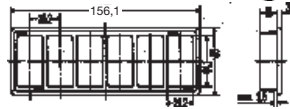


Installation strips

Black.
Installation opening:
156.1 x 48.2 mm



Installation strip for 6 switches
8HG 713 626-001 PU 12

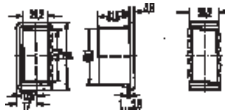


Installation strip for 3 switches
8HG 714 504-001 PU 10

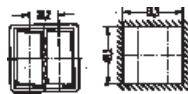
Installation strip insertion system

Black.
2 end pieces are required to put together an installation strip. This installation strip can be supplemented by any number of connecting pieces.

End piece
8HG 716 734-001 PU 10
8HG 716 734-007 PU 200



Connecting piece
8HG 716 735-001 PU 10
8HG 716 735-007 PU 200



Cover

For covering planned switch installation openings in the installation strips and in the installation strip insertion system.

Cover
9HB 713 629-001 Vp. 10



Receptacle housing
8-pole
8JA 713 631-001 PU 10
8JA 713 631-007 PU 1000



Tell-tale lights

Tell-tale lights for switch series 007 832-...

with 12 V bulb 2AA 713 628-021 PU 10
with 24 V bulb 2AA 713 628-031 PU 10
with LED, 12 V and 24 V 2AA 713 628-041 PU 10



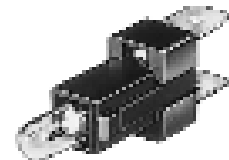
Tell-tale lights for switch series 004 570-...

with 12 V bulb 2AA 713 628-001 PU 10
with 24 V bulb 2AA 713 628-011 PU 10
with LED, 12 V and 24 V 2AA 713 628-051 PU 10



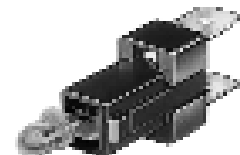
Bulb sockets

for tell-tale lights
with 12 V bulb 9FF 713 627-001 PU 10
with 24 V bulb 9FF 713 627-011 PU 10



Bulb sockets with LED, 12 V and 24 V

for tell-tale lights with LED Ø 5 mm 9FF 713 627-031 PU 10



Receptacle housing

for bulb sockets
2-pole 8JA 715 600-001 PU 10



Hella KGaA Hueck & Co.
Customer Service Center
Rixbecker Straße 75
59552 Lippstadt, Germany
Phone: 0180 5 250001 (€ 0.24/min., from a German landline)
Fax: 0180 2 250001 (€ 0.06 per connection, from a German landline)
Internet: www.hella.com



***Ideas today for
the cars of tomorrow***